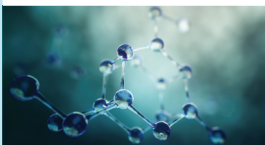




European Research
Infrastructure Consortia - ERICs*:
Enabling excellent science in
service of society



www.eric-forum.eu

@ERIC_forum

Table of contents

- 03** About Research Infrastructures
- 03** About European Research Infrastructure Consortium (ERIC)
- 04** The ERIC Landscape (by EC implementing decision)
- 05** The ERIC Landscape (by ESFRI cluster)
- 06** The ERIC Community
- 07** ERICs in the ESFRI cluster projects
- 08** About the ERIC Forum
- 09** Role of ERICs in the European Research Area
- 11** ERICs in the Energy cluster:
ECCSEL-ERIC
- 13** ERICs in the Environment cluster:
EMSO ERIC, EPOS-ERIC, EURO-ARGO ERIC, ICOS-ERIC,
LifeWatch ERIC.
- 19** ERICs in the Health and Food cluster:
BBMRI-ERIC, EATRIS-ERIC, ECRIN-ERIC, EMBRC-ERIC,
EU-OPENSREEN ERIC, Euro-Biolmaging ERIC, Instruct-ERIC.
- 27** ERICs in the Physical Sciences and Engineering cluster:
CERIC-ERIC, European Spallation Source ERIC, JIV-ERIC.
- 31** ERICs in the Social and Cultural Innovation cluster:
CESSDA-ERIC, CLARIN-ERIC, DARIAH-ERIC, European Social
Survey-ERIC, SHARE-ERIC.
- 37** The ERIC Map
- 38** Contact

About Research Infrastructures

‘Research Infrastructure*’ means facilities, resources and related services that are used by the scientific community to conduct top-level research in their respective fields and covers major scientific equipment or sets of instruments; knowledge-based resources such as collections, archives or structures for scientific information; enabling Information and Communications Technology-based infrastructures such as Grid, computing, software and communication, or any other entity of a unique nature essential to achieve excellence in research. Such infrastructures may be ‘single- sited’ or ‘distributed’ (an organised network of resources).

European Research Infrastructure Consortium

The European Research Infrastructure Consortium (ERIC) is a specific legal entity set up by a decision of the European Commission, that facilitates the establishment and operation of Research Infrastructures with European interest.

Advantages of an ERIC

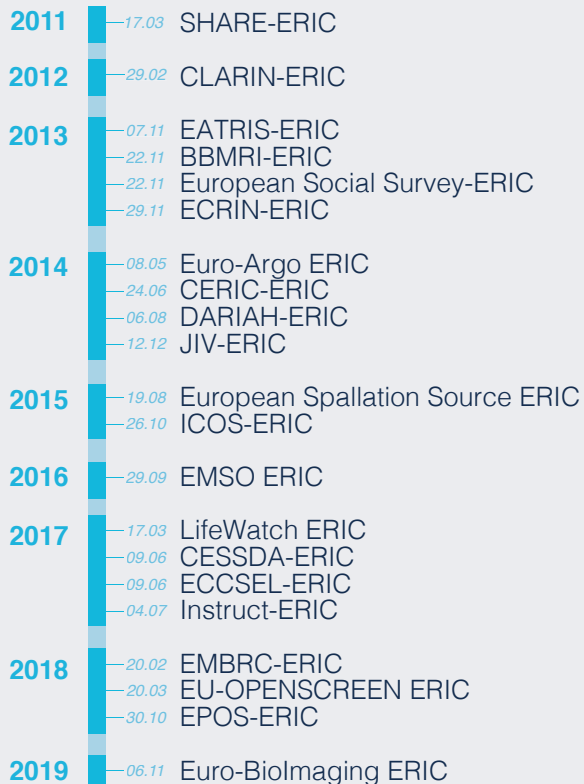
Among others, it provides a legal capacity recognised in all EU Member States, a fast process to create an international organisation, and exemptions from VAT and excise duty. Moreover, an ERIC may adopt its own procurement procedures which have to respect the principles of transparency, non-discrimination and competition.

Procedures for establishing an ERIC

Upon the proposal from Member States/Associated Countries, the European Commission evaluates the added-value to the ERA (European Research Area) before the establishment of the ERIC. Procedures to obtain a formal commitment of a state to become a member or host an ERIC vary from country to country. The stakeholders of future ERICs are advised to work, well in advance, with their national authorities when preparing an ERIC. More information is available in the ERIC Practical Guidelines.

The ERIC Landscape

Members of the European Research Infrastructure Consortium (ERIC) are the following, listed by chronological order of the Commission decision:



The ERIC Landscape

The ERIC clusters based on the ESFRI roadmap are the following:

- Energy
- Environment
- Health & Food
- Physical Sciences & Engineering
- Social & Cultural Innovation

Energy	ECCSEL-ERIC
Environment	EMSO ERIC EPOS-ERIC EURO-ARGO ERIC ICOS-ERIC LifeWatch ERIC
Health & Food	BBMRI-ERIC EATRIS-ERIC ECRIN-ERIC EMBRC-ERIC EU-OPENSOURCE ERIC Euro-BioImaging ERIC Instruct-ERIC
Physical Sciences & Engineering	CERIC-ERIC European Spallation Source ERIC JIV-ERIC
Social & Cultural Innovation	CESSDA-ERIC CLARIN-ERIC DARIAH-ERIC European Social Survey-ERIC SHARE-ERIC

About the ERIC Community

In addition to the 21 established ERICs mentioned in page 04 - *ERIC Landscape*, the ERIC community counts as of June 2020 the following 11 organizations in the pipeline to becoming an ERIC:

- ACTRIS..... Aerosols, Clouds and Trace gases Research Infrastructure.
- AnaEE..... Infrastructure for Analysis and Experimentation on Ecosystems.
- CTAO..... Cherenkov Telescope Array Observatory.
- EMPHASIS..... European Infrastructure for Multi-scale Plant Phenomics and Simulation.
- E-RIHS..... European Research Infrastructure for Heritage Science.
- EST..... European Solar Telescope.
- EU SOLARIS..... European Solar Research Infrastructure for Concentrated Solar Power.
- KM3NET..... KM3 Neutrino Telescope 2.0
- Mirri..... Microbial Resource Research Infrastructure.
- ELI..... Extreme Light Infrastructure.
- Infrafrontier..... European Research Infrastructure for the generation, phenotyping, archiving and distribution of mouse disease models.

ERICs in the ESFRI cluster projects

ERICs and ERICs-to-be are part of the 5 ESFRI cluster projects in the EOSC (European Open Science Cloud) panorama:



ENVRI-FAIR

For Environmental Research

ACTRIS, ANAEE, EMSO ERIC, Euro-Argo ERIC, EPOS-ERIC, LifeWatch ERIC, ICOS-ERIC.



EOSC-LIFE

For Life Sciences

BBMRI-ERIC, ECRIN-ERIC, EATRIS-ERIC, EMBRC-ERIC, EU-OPENSOURCE ERIC, Euro-Biolmaging ERIC, EMPHASIS, Infrafrontier, Instruct-ERIC, MIRRI.



ESCAPE

For Astronomy and Particle Physics

JIV-ERIC, CTAO.



PaNOSC

For multidisciplinary scientific analysis

CERIC-ERIC, European Spallation Source ERIC, ELI Delivery Consortium.



SSHOC

For Social Sciences and Humanities

CESSDA-ERIC, European Social Survey-ERIC, SHARE-ERIC, CLARIN-ERIC, DARIAH-ERIC, E-RIHS.

About the ERIC Forum

During the past years, the European Commission and the ERICs met twice a year to address and discuss issues in the implementation of the ERIC regulation. ERICs exchanged during these meetings commonly shared challenges in fields ranging from human resources management, procurement, VAT and excises exemption implementation, in-kind contributions, as well as the socio-economic impact of ERICs, performance monitoring and more.

Aware of the constant enlargement of the community, the existing ERICs formed in **2017** the ERIC Forum to further strengthen the coordination among ERICs and interact effectively with the EC to achieve the full implementation of the ERIC regulation.

ERIC Forum OBJECTIVES



Advance ERICs' Operations

The strategic approach of the ERIC Forum will contribute to address critical challenges, develop best practices and share relevant know-how for the effective operation of ERICs and ERICs-to-be.



Role of ERICs in the European Research Area

ERIC Forum on the development of KPIs for Research Infrastructures

The ERIC Forum was invited by the ESFRI Working Group on Monitoring to contribute to the process of developing a standard set of Key Performance Indicators (KPIs) that could be used to monitor pan-European Research Infrastructures. KPIs are an internal management tool that helps Research Infrastructures to track progress towards set objectives and evaluate the delivered results in a qualitative and quantitative way.

The ERIC landscape covers 5 main scientific domains of the ESFRI roadmap, ranging from energy, environment, health and food, physical sciences and engineering, to social and cultural innovation.

Considering the diversity of Research Infrastructures in terms of organisational structure, mission, scientific area, level of operation and more, the ERIC Forum highlights the need for each KPI to be based on specific criteria (RACER* for ERICs) and customized according to the unique character of each Research Infrastructure. Moreover, it is fundamental to use KPIs only as a support tool for the individual monitoring of RIs, rather than a tool for comparing RIs and their respective performances.

The high performance of European Research Infrastructures has made a significant contribution to the development of the European Research Area.

The position paper is available [here](#).

*RACER (*Relevant, Acceptable, Credible, Easy and Robust*).

Role of ERICs in the European Research Area

ERIC Forum on the future of the ERA, its priorities and goals

ERICs are the backbone of the European Research Area and bring an added value to its development through scientific and technological contributions. ERICs provide the European research community with access to resources and cutting-edge facilities, thus supporting scientific excellence and responding to global requirements in all research fields. Moreover, ERICs support mobility of researchers and knowledge across the ERA, and promote collaboration between countries.

In that regard, the ERIC Forum plays an important role in the implementation of the ERA. For that, the Forum was invited in 2019 by the ERAC (the European Research Area and Innovation Committee) to contribute to the draft narrative about the future of the ERA and to provide a response on the ERA priorities and goals. The position paper addresses a set of questions asked by the ERAC WP in relation to the three ERA objectives: 1) An inspiring and empowering ERA, 2) A seamless, connected and competitive ERA, 3) An involving and inclusive collaborative ERA). The position paper is available [here](#).

ERIC Forum on the response of its members to societal challenges

ERICs are important science enablers that address societal challenges through various research activities and services. In view of the upcoming European Union's Research and Innovation Framework Programme, Horizon Europe, ERICs and ERICs-in-preparation have defined their contribution to the five mission areas being developed for Horizon Europe: 1) Cancer, 2) Adaptation to climate change including societal transformation, 3) Healthy oceans, seas, coastal and inland waters, 4) Climate-neutral and smart cities, 5) Soil health and food.

ENERGY



■ ECCSEL-ERIC

ECCSEL-ERIC

ECCSEL, the European Carbon Dioxide Capture and Storage Laboratories, is a world-class CCUS (Carbon Capture, Transport, Utilisation and Storage) Research Infrastructure offering transnational access to world-leading European facilities to conduct research.

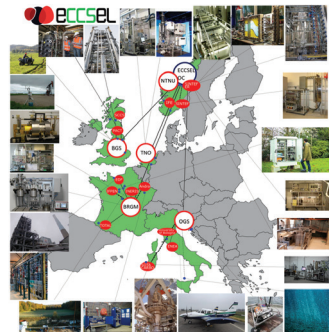
ECCSELERATE project will define the next steps and facilitate the emerging developments of chain integration optimisation with 3rd generation capture technologies, and potential sustainable synergies with CCU (Carbon Capture and Utilization). This will enable researchers to generate substantial knowledge leading to new innovative, cost effective solutions for CCUS, helping to ensure energy security and combat climate change by contributing to the delivery of a low carbon energy and industry sector future.

ECCSEL ERIC is contributing to reach the goals set by the European Green Deal, the roadmap for making the EU's economy sustainable.

■ **ECCSEL-ERIC Member Countries:**
NO, FR, IT, NL, UK.

■ **Contact ECCSEL-ERIC:**
E-mail: info@eccsel.org

■ **www.eccsel.org**



ENVIRONMENT



- EMSO ERIC
- EPOS-ERIC
- EURO-ARGO ERIC
- ICOS-ERIC
- LifeWatch ERIC

EMSO ERIC



EMSO, the European Multidisciplinary Seafloor and water column Observatory, aims to explore the oceans, to gain a better understanding of phenomena happening within and below them, and to explain the critical role that these phenomena play in the broader Earth systems.

Observatories are platforms equipped with multiple sensors, placed along the the water column and on the seafloor at key sites around Europe. The observatory design allows interdisciplinary objectives to be addressed simultaneously across temporal and spatial scales.

EMSO advances in information and knowledge of ocean processes in the water column and in deep ocean environments, improving resilience to climate change, natural and anthropogenic disasters, creating new professional skills and education in marine sciences, and promoting sustainable blue growth, through innovative services and underwater technology.

■ EMSO ERIC Member Countries:

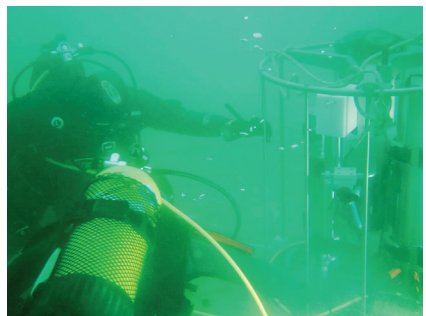
IT, EL, ES, FR, IE, PT, RO, UK.

■ Contact EMSO ERIC:

Via di Vigna Murata 605, 00143 Rome
Operative Office: Via Giunio Antonio Resti 63
00143 Rome
Tel +39 06.45431040
E-mail: info@emso-eu.org

■ www.emso.eu

@EMSOeu



EMSO OBSEA | UPC

EPOS-ERIC



EPOS, the European Plate Observing System, is the research infrastructure aimed at ensuring sustainable and universal use and re-use of multidisciplinary solid Earth science data and products fostering state-of-the-art research and innovation.

EPOS brings together Earth scientists, national research infrastructures, ICT experts and decision makers to establish and underpin a sustainable and long-term access to solid Earth science data and services integrating diverse European Research Infrastructures under a common federated framework. EPOS relies on e-science innovation to foster progress in science for supporting a safe and sustainable society.



■ EPOS-ERIC Member Countries:

IT, BE, DK, EL, FR, IS, NL, NO, PL, PT, SI, UK, CH*. (*Observer)

■ Contact EPOS-ERIC:

Executive Coordination Office, Via di Vigna Murata 605, Rome. Italy
E-mail: info@epos-eric.eu

■ www.epos-eu.org

@EPOSeu

Euro-Argo ERIC



Euro-Argo ERIC is a Research Infrastructure which allows active coordination and strengthening of the European contribution to the international Argo programme. It allows to provide real time data to climate research and operational oceanography, sustaining 1/4 of Argo 4000 floats network.

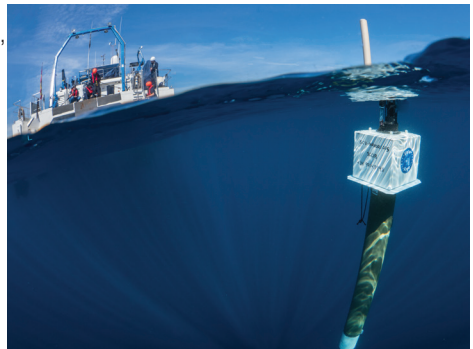
The international Argo programme was initiated in 1999 as a pilot project endorsed by the Climate Research Program of the World Meteorological Organization, GOOS, and the Intergovernmental Oceanographic Commission.

The set of the ERIC has strengthened the position of the European manufacturers, it facilitates the development of the Argo in Europe towards deepest ocean and biogeochemistry essential for Climate change applications an ocean health monitoring.

- **Euro-Argo ERIC Member Countries:**
FR, BG, DE, EL, ES, FI, IE, IT, NO, NL, UK, PL*.
(*Observer)

- **Contact Euro-Argo ERIC:**
Campus Ifremer, Technopole Brest Iroise
1625 Route de Sainte-Anne.
29280 Plouzané, FRANCE.
Phone: +33(0)2 98 22 44 83
E-mail : euroargo@ifremer.fr

- **www.euro-argo.eu**
@EuroArgoERIC



Picture by: Miquel Gornila/SOCIB

ICOS-ERIC



ICOS, the Integrated Carbon Observation System provides standardised and open data from more than 140 measurement stations across 12 European countries. The stations observe greenhouse gas concentrations in the atmosphere as well as carbon fluxes between the atmosphere, the land surface and the oceans. Thus, ICOS is rooted in three domains: Atmosphere, Ecosystem and Ocean.

The ICOS community consists of more than 500 scientists in both its current Member and Observer countries and beyond. More than 80 renowned universities or institutes are a part of the ICOS community and ICOS has strong connections to colleagues and operators outside of ICOS.

Greenhouse gas data from ICOS stations is available open access for anyone to use and analyse. ICOS-based knowledge supports policy- and decision-making to combat climate change and its impacts, thus contributing towards the EU strategic agenda in building a carbon-neutral and green Europe.

- **ICOS-ERIC Member Countries:**
FI, BE, CZ, DE, DK, FR, IT, NL, NO, SE, UK, CH*. (**Observer*)

- **Contact ICOS-ERIC:**
ICOS ERIC Head Office:
Erik Palménin aukio 1,
FI-00560 Helsinki, FINLAND
E-mail: info@icos-ri.eu

- **www.icos-ri.eu**
@ICOS_RI



Picture by Konsta Punkka, copyright to ICOS-ERIC

LifeWatch ERIC



LifeWatch ERIC is the e-Science European infrastructure for biodiversity & ecosystem research.

LifeWatch ERIC facilitates the sharing and aggregation of open-data, and their integration and analysis in advanced models. Its Virtual Research Environments, combined with computational power and disruptive technologies, make it possible to test scenarios of change on biodiversity organisation and conservation, ecosystems and their services, under multiple drivers in the future.

LifeWatch ERIC supports decision-makers and citizens to build a climate-neutral, green, FAIR-er Europe, and assists in the implementation of the EU Green Deal roadmap and in reaching the 2030 Biodiversity Strategy targets, supplying evidence-based synthetic knowledge and nature-based solutions to tackle societal challenges.

■ LifeWatch ERIC Member Countries:

ES, BE, EL, IT, NL, PT, SI, SK*.

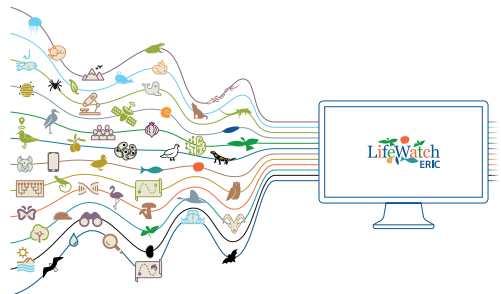
(* Observer)

■ Contact LifeWatch ERIC:

Statutory Seat:
Plaza España SN, SECTOR II-III
41013 Seville, Spain
E-mail: info@lifewatch.eu

■ www.lifewatch.eu

@LifeWatchERIC



HEALTH and FOOD



- [BBMRI-ERIC](#)
- [EATRIS-ERIC](#)
- [ECRIN-ERIC](#)
- [EMBRC-ERIC](#)
- [EU-OPENSREEN ERIC](#)
- [Euro-Biolmaging ERIC](#)
- [Instruct-ERIC](#)

BBMRI-ERIC



BBMRI is a European Research Infrastructure for biobanking that brings together all the main players from the biobanking field (researchers, biobankers, industry, and patients) to boost biomedical research.

BBMRI offers quality management services, support with ethical, legal and societal issues, and a number of online tools and software solutions for biobankers and researchers. Ultimately, the goal of BBMRI is to make new treatments possible.

BBMRI-ERIC's Directory is one of the largest in the world with over 100 million samples and datasets from more than 600 biobanks across 20 European countries and 1 international organization. Researchers can browse our catalogue and filter by diagnosis, type of material, quality characteristics or country and they can send single access request to multiple biobanks. Biobanks can increase their visibility by allowing their samples to be findable by Europe's 500,000 life scientists. Discover the recently added COVID-19 filter to find samples and datasets applicable to research on SARS-CoV-2 and COVID-19: <https://directory.bbmri-eric.eu>

■ **BBMRI-ERIC Member Countries:**

AT, BE, BG, CZ, DE, EE, EL, FI, IT, LV, MT, NL, NO, PL, SE, UK, CH*,CY*,LT*,TR*, and IARC-WHO*. (*Observer)

■ **Contact BBMRI-ERIC:**

BBMRI-ERIC headquarters:
Neue Stiftingtalstrasse 2/B/6
8010 Graz, Austria
Phone: +43 316 34 99 170
E-mail: contact@bbmri-eric.eu



■ **www.bbmri-eric.eu @BBMRIERIC**

eatris

European infrastructure
for translational medicine

EATRIS-ERIC

The mission of EATRIS, the European Research Infrastructure for Translational Medicine, is to accelerate the effective translation of research discoveries into patient benefit. EATRIS provides fast, tailored access to technologies and expertise from 110 academic centres, focusing on preclinical and early clinical medicines development.

Through bridging the gap between research results and new diagnostic tools and therapies that benefit patients, EATRIS strengthens the productivity and impact of the European Health research and Innovation as well as increases the benefits of research for the health and well-being of the population. By pulling together the scientific and technological expertise and know-how of 110 academic centres in 13 countries, EATRIS contributes to Europe's efforts for stronger cross-border cooperation and more coordinated response to tackle health-related challenges.

As driver of industry-academia collaborations, EATRIS also enables cross-sectorial research and innovation and helps unlock the full potential of new tools, technologies and digital solutions for a healthy society.

- **EATRIS-ERIC Member Countries:**

NL, BG, CZ, ES, FI, FR, IT, LU, NO, PT, SE, SI, LV*. (*Observer)

- **Contact EATRIS-ERIC:**

De Boelelaan 1118, 1081 HZ Amsterdam
The Netherlands
Phone: +31 20 444 2254
E-mail: info@eatris.eu

- **www.eatris.eu**

@EatrisEric



ECRIN-ERIC



ECRIN, the European Clinical Research Infrastructure Network, links scientific partners and networks across Europe to facilitate multinational Clinical Research.

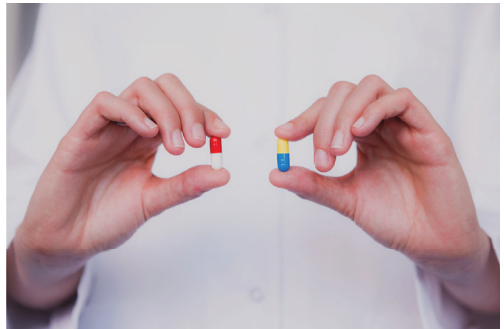
ECRIN's vision is to generate scientific evidence to optimise medical practice. By managing and supporting clinical trials across borders, connecting networks, and advising and implementing policy, ECRIN advances knowledge flow, competitiveness and integration in European clinical research.

ECRIN plays a key role within Societal Challenge 1 - Health, demographic change and wellbeing; supporting multinational clinical studies that will provide new therapeutic, diagnostic and preventive solutions for Europe's main health challenges, and contributing to develop tools and strengthen capacity for clinical research.

- **ECRIN-ERIC Member Countries:**
FR, CZ, DE, ES, HU, IE, IT, NO, PT,
CH*, PL*, SK*.
(* *Observer*)

- **Contact ECRIN-ERIC:**
5-7 rue Watt
75013 Paris, France
E-mail: contact@ecrin.org

- **www.ecrin.org**
@ECRIN_ERIC



EMBRC-ERIC



The European Marine Biological Resource Centre (EMBRC) aims to advance fundamental and applied marine biology and ecology research, while promoting the development of blue biotechnology. This is achieved by facilitating access to marine organisms and ecosystems, experimental facilities, technological platforms, and relevant services in its 32 marine stations in 9 European countries in support of robust and innovative academic and industrial research.

EMBRC works across a wide range of marine biology areas and with diverse stakeholders.

EMBRC contributes to societal challenges by promoting sustainable solutions related to the functioning of marine ecosystems and the planet as a whole, and enabling access to marine biodiversity across Europe to support large-scale, high-quality and innovative marine science. In particular, we support new cures, drugs, food sustainability, climate change, and blue biotechnology.

■ **EMBRC-ERIC Member Countries:**
FR, BE, EL, ES, IL, IT, NO, PT, UK.

■ **Contact EMBRC-ERIC:**
4 Place Jussieu - BC 93
75252 Paris Cedex 05 (FR)
E-mail: secretariat@embrc.eu
Phone: +33.1.44.27.63.37

■ **www.embrc.eu**
@EMBRC_EU



EU-OPENSREEN ERIC



The European Infrastructure of Open Screening Platforms for Chemical Biology develops novel small chemical compounds that elicit specific biological responses on organisms, cells or cellular components. EU-OPENSREEN offers researchers from Europe and around the world open access to a uniquely broad range of high technologies and tools for the systematic screening of chemical substances for their biological effects.

EU-OPENSREEN overcomes the technically and logistically daunting task of developing high-quality tool compounds, which may then be translated into marketable chemical products for unmet needs in medicine, nutrition, agriculture and environment.

- **EU-OPENSREEN ERIC Member Countries:**
DE, CZ, ES, FI, LV, NO, PL.
- **Contact EU-OPENSREEN ERIC:**
Robert-Rössle-Str. 10, Building C87 |
D-13125
Berlin Germany
Phone: +49 (0)30 9489 2422
- **www.eu-openscreen.eu**
@EuOpenscreen



Euro-BioImaging ERIC



Euro-BioImaging is a research infrastructure that offers open access to imaging technologies, training and data services in biological and biomedical imaging.

Life scientists can access imaging instruments hosted at 21 Nodes, expertise, training opportunities and data management services.

Imaging technologies are the central technology platform driving research in most disciplines of the life sciences.

Euro-BioImaging contributes to discoveries in health, food security, plant biology, marine ecosystems, and the environment. It also promotes FAIR image data, enabling cross-disciplinary research via integration with other data types.

- **Euro-BioImaging ERIC Member**

- Countries:**

- FI, AT, BG, CZ, DK, EMBL, FR, HU, IL, IT, NO, NL, PT, SI, SE, UK, BE*.

- (*Observer)

- **Contact Euro-BioImaging ERIC:**

- P.O. Box 123, Tykistökatu 6A

- FI-20521, Turku, FINLAND

- E-mail: info@eurobioimaging.eu

- **www.eurobioimaging.eu**

- @EuroBioImaging



Instruct-ERIC



Instruct-ERIC is the single point of access to technology and expertise for structural biology research.

Through its specialist research centres in Europe, Instruct-ERIC offers funded research visits, training, internships and R&D awards.

By promoting integrative methods, Instruct-ERIC enables excellent science and technological development for the benefit of all life scientists.

In making high-end structural biology facilities available to scientists, Instruct-ERIC is helping to democratise and harmonise European research tackling key societal challenges in the medical and life science domains, enabling insights and developments with a global impact.

■ Instruct-ERIC Member Countries:

UK, BE, CZ, DK, ES, EMBL, FI, FR, IL, IT, LV, NL, PT, SK, EL* (*Observer*).

■ Contact Instruct-ERIC:

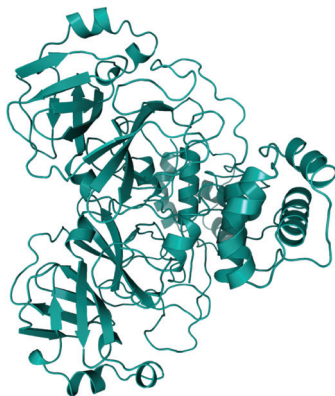
Instruct-ERIC Hub, Oxford House,
Parkway Court, John Smith Drive,
Oxford OX4 2JY

Phone: +44 (0) 1865 98 86 39

E-mail: admin@instruct-eric.eu

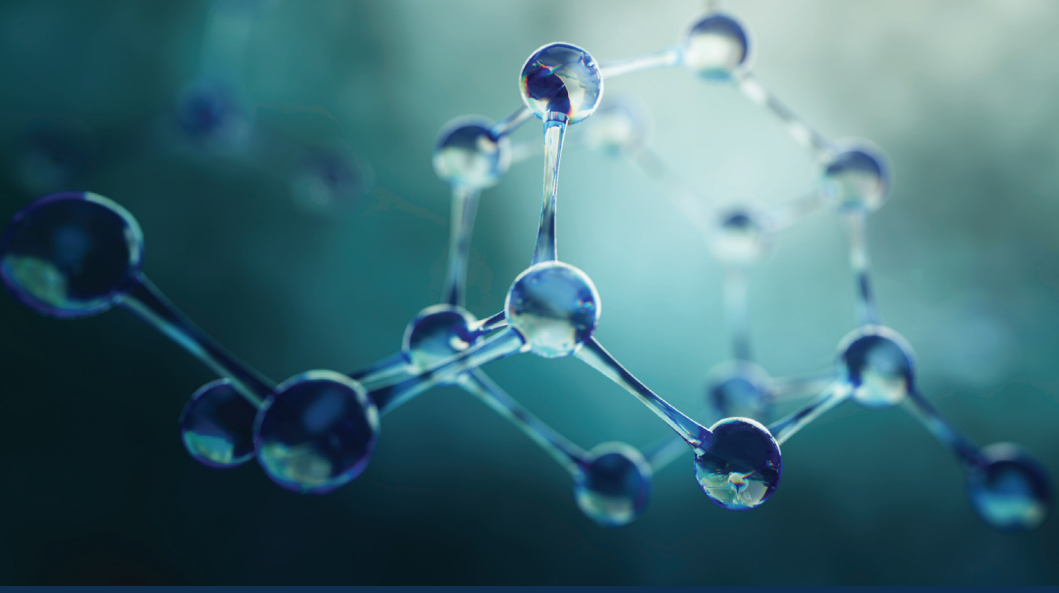
■ instruct-eric.eu

@instructhub



*Structural biology methods have been crucial in determining SARS-CoV-2 protein structures.
Image: SARS-CoV-2 main protease (6YB7), Diamond Light Source, Instruct Centre UK.*

PHYSICAL SCIENCES and ENGINEERING



- CERIC-ERIC
- European Spallation Source ERIC
- JIV-ERIC

CERIC-ERIC

CERIC

Central European
Research Infrastructure
Consortium

CERIC, the Central European Research Infrastructure Consortium, integrates and provides open access to some of the best facilities in Europe, to help science and industry advance in all fields of materials, biomaterials and nanotechnology.

With a single entry point to leading national research infrastructures in 8 European countries, it enables the delivery of innovative solutions to societal challenges in the fields of energy, health, food, cultural heritage and more.

To contribute in providing solutions to pressing societal challenges, CERIC is increasing its focus on the development of services in the field of energy storage. This will contribute to the EU climate goals, addressed through the Energy and climate plans, to the EU green Deal, and potentially also to the Horizon Europe Mission on 100 carbon neutral cities. Another priority is life science, with actions such as a COVID-19 rapid access, contributing to the SDG (Sustainable Development Goals) Health and Wellbeing.

- **CERIC-ERIC Member Countries:**
IT, AT, CZ, HR, HU, PL, RO, SI, RS*
(*Observer)

- **Contact CERIC-ERIC:**
S.S. 14 - km 163,5 in
AREA Science Park
34149 Basovizza
Trieste - Italy
E-mail: info@ceric-eric.eu

- **www.ceric-eric.eu**
@CERICnews



European Spallation Source ERIC



The European Spallation Source is a multi-disciplinary research infrastructure with the vision to build and operate the world's most powerful neutron source. The facility is under construction in Lund (Sweden), while the Data Management and Software Centre (DMSC) is based in Copenhagen (Denmark). The unique capabilities of ESS will both greatly exceed and complement those of today's leading neutron sources, enabling new opportunities for researchers across the spectrum of scientific discovery, including materials and life sciences, energy, environmental technology, cultural heritage and fundamental physics.

Research with neutrons gives us knowledge that improves our everyday lives and is a necessary component to solving society's grand challenges. The research conducted at ESS will contribute to new and better materials for engineering and digital infrastructure, medical technology, pharmaceuticals, energy solutions, decarbonisation technologies and our basic understanding of the fundamental science that underpins these socio-economic achievements.

■ European Spallation Source ERIC Member Countries:

SE, CH, CZ, DE, DK, EE, ES, FR, HU, IT,
NO, PL, UK, NL*. (**Observer*)

■ Contact European Spallation Source ERIC:

Odarslövsvägen 113,
224 84 Lund, Sweden
E-mail: info@ess.eu

■ www.ess.eu [@essneutron](https://twitter.com/essneutron)



Aerial view of the ESS construction site, April 2020. Photo: Perry Nordeng

JIV-ERIC



JIVE

Joint Institute for VLBI
ERIC

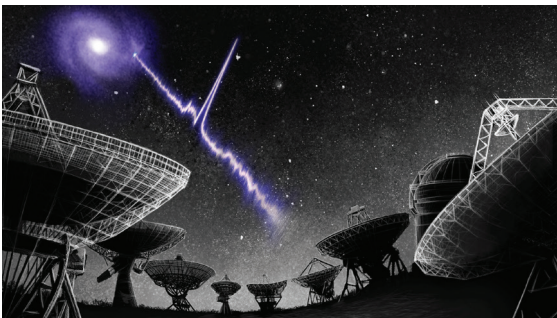
JIVE, the Joint Institute for VLBI ERIC, facilitates radio astronomical research as the data processing and user support centre of the European VLBI Network (EVN), a globally distributed research infrastructure composed by some of the largest radio telescopes on Earth. JIVE develops real-time applications for large data flows (transport and processing), and advances precise synchronization techniques using a state-of-the-art e-infrastructure. JIVE represent a unique and collaborative European initiative, as it provides joint data products that individual members cannot produce alone.

Through accessible data archive services, on-site user support, and educational and training activities, JIVE contributes to societal challenges by promoting diversity in science, facilitating science fundamental to our understanding of the Universe, with additional relevance to Earth sciences (with ties to climate change), space weather, and habitability zones and possibility of life in planets around other stars.

- **JIV-ERIC Member Countries:**
NL, ES, FR, LV, SE, UK.

- **Contact JIV-ERIC:**
Joint Institute for VLBI ERIC
Oude Hoogeveensedijk 4
7991 PD Dwingeloo
The Netherlands
Telephone: +31 521 596 524
E-mail: jive@jive.eu

- **www.jive.eu**
[@jivevlbi](https://twitter.com/jivevlbi)



Credit of artwork: Danielle Futselaar (art source.nl)

SOCIAL and CULTURAL INNOVATION

- CESSDA-ERIC
- CLARIN-ERIC
- DARIAH-ERIC
- European Social Survey-ERIC
- SHARE-ERIC

CESSDA-ERIC



CESSDA, the Consortium of European Social Science Data Archives, provides large-scale, integrated and sustainable data services to the Social Sciences.

CESSDA brings together social science data archives across Europe, with the aim of promoting the results of social science research and supporting national and international research and cooperation.

CESSDA will provide a platform for social data researchers that integrates with the European Open Science Cloud within the 2020-2022 timeframe.

The CESSDA Data Catalogue is a platform for researchers wanting to find and reuse social science and humanities research data. The CESSDA Data Management Expert Guide helps social science researchers make their research data Findable, Accessible, Interoperable and Reusable (FAIR).

- **CESSDA-ERIC Member Countries:**
NO, AT, BE, CZ, DE, DK, EL, FI, FR, HU,
NL, PT, SE, SI, SK, UK, CH* (**Observer*).

- **Contact CESSDA-ERIC:**
Parkveien 20,
Bergen, Norway
Phone: +47 401 00 964
Email: cessda@cessda.eu

- **www.cessda.eu**
@CESSDA_Data



Source: K.MitchHodge, Social Scientist, Unsplash

CLARIN-ERIC

CLARIN ERIC



Common Language Resources and Technology Infrastructure

CLARIN, the Common Language Resources and Technology Infrastructure, makes digital language resources available to scholars, researchers, students and citizen-scientists from all disciplines, especially in Humanities and Social Sciences through single sign-on access. CLARIN offers long-term solutions and technology services for deploying, connecting, analysing and sustaining digital language data and tools.

The CLARIN services support research addressing Horizon Europe missions areas and societal challenges at large by enabling comparative studies of public debate and parliamentary discussion based on textual data across languages and regions for topics such as pandemics and socio-economic development.

- CLARIN-ERIC Member Countries:**
 NL, AT, BG, CY, CZ, DE, DK, EE, EL, FI, HR, HU, IS, IT, LT, LV, NO, PL, PT, SE, SI, FR*, ZA*, UK*
 Third Parties: Carnegie Mellon University (USA) (**Observer*)

- Contact CLARIN-ERIC:**
 CLARIN ERIC, c/o Utrecht University,
 Drift 10, 3512 BS Utrecht,
 The Netherlands
 Email: clarin@clarin.eu

- www.clarin.eu**
@CLARINERIC



DARIAH ERIC



DARIAH, the Digital Research Infrastructure for the Arts and Humanities, is a pan-European infrastructure for arts and humanities scholars working with computational methods.

It supports digital research as well as the teaching of digital research methods. It enhances and supports digitally enabled research and teaching across the Arts and Humanities.

DARIAH ensures that humanities researchers are able to assess the impact of technology on their work in an informed manner, access the data, tools, services, knowledge and networks they need seamlessly and in contextually rich virtual and human environments and produce excellent, digitally-enabled scholarship that is reusable, visible and sustainable.

- **DARIAH ERIC Member Countries:**
FR, AT, BE, BG, CY, CZ, DE, DK, EL,
HR, IE, IT, LU, MT, NL, PL, PT, RS, SI.
- **Contact DARIAH ERIC:**
TGIR Huma-Num, CNRS UMS 3598
54 bd Raspail
75006 Paris, France
Email: info@dariah.eu
- **www.dariah.eu**
[@DARIAHeu](https://twitter.com/DARIAHeu)



European Social Survey-ERIC

The European Social Survey (ESS) is a European research infrastructure consortium providing freely accessible survey data for use by academics, policymakers, civil society and the wider public. The nationally representative survey on a wide range of topics has been undertaken every two years since 2002 to monitor the attitudes and behaviour of people in 39 countries.

ESS data has played a vital role in helping to shape pan-European governance and policy in participating countries for almost 20 years. As Europe faces grand societal challenges such as climate change, immigration, welfare reform, declining political trust and health inequalities (amongst others), the ESS continues to provide regular robust data to help improve society.

■ ESS-ERIC Member Countries:

UK, AT, BE, BG, CY, CZ, DE, EE, FI, FR, HR, HU, IE, IS, IT, LV, LT, NL, NO, PL, PT, SE, SI, SK, CH* (**Observer*).

■ Contact ESS-ERIC:

City, University of London
Northampton Square
London, EC1V 0HB, United Kingdom
Email: ess@city.ac.uk
Phone: +44 (0)207 0404901



Copyright: Miclek/Shutterstock.com

- www.europeansocialsurvey.org
- [@ESS_Survey](http://www.esswellbeingmatters.org)

SHARE-ERIC



SHARE, the Survey of Health, Ageing and Retirement in Europe, is a multidisciplinary and cross-national panel database of micro data on health, socio-economic status and social and family networks of about 140,000 individuals aged 50 or older (around 380,000 interviews). SHARE covers all 27 EU member states, as well as Switzerland and Israel. Since its setup as the first-ever ERIC, SHARE has supplied policymakers with reliable and comparable data to base their decisions on.

Research based on SHARE data enables scientists and policy makers to tackle the challenges of health, pensions, long-term care, old-age poverty and population ageing in general with the help of scientific evidence and to improve the quality of life of all generations. In addition, the SHARE Corona Survey will enable policy makers to respond to the non-intended short- and long-run effects of the epidemic control decisions on the economic and social living conditions of a large and vulnerable part of the population.

- **SHARE-ERIC Member Countries:**
DE, AT, BE, BG, CY, CZ, EL, FR, HR,
HU, IL, IT, NL, PL, SE, SI, CH*.
(*Observer)

- **Contact SHARE-ERIC:**
Amalienstr. 33
80799 Munich, Germany
Email: info@share-project.org

- **www.share-eric.eu**
@SHARE_MEA

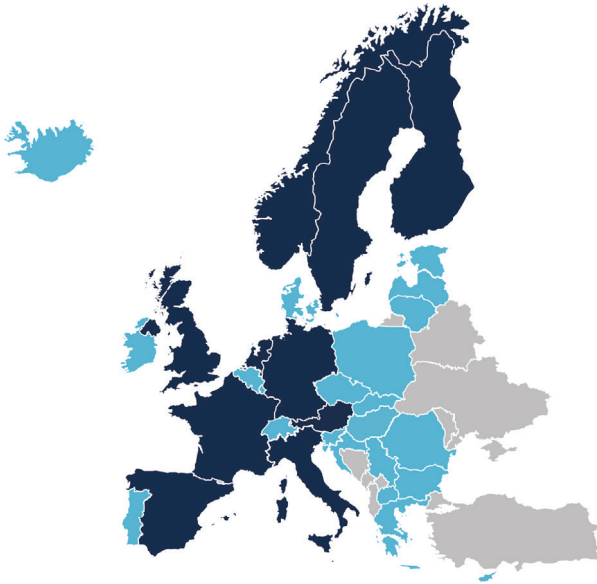


How we age in Europe.



The ERIC Map

Below is the map of Europe showing countries which host the statutory seat of an ERIC (dark blue) and countries which are members of an ERIC (turquoise blue).



ERICs are active in all EU Member States, Associated countries and third countries. They are open for accession of new members.

Scientific collaborations in the fields of energy, environment, health and food, physical sciences and engineering, and social and cultural innovation would foster research and innovation in the European Research Area.



Contact us:

info@eric-forum.eu



www.eric-forum.eu

@ERIC_forum



ERIC Forum has received funding from the European Union's Horizon 2020 research and innovation programme under grant agreement N. 823798